

# How to Install and configure NFS Server for DreamBox & FlashWizard

Requirements: Windows 2000 or XP Professional **ONLY!!!**

NTFS File System.

From the Dream Box download the files

Passwd & Group that can be found in the directories var/etc.

Services for Unix for Microsoft. (217 MB)

<http://www.microsoft.com/windows/sfu/downloads/default.asp>

For those that don't have Microsoft Passport get it here:

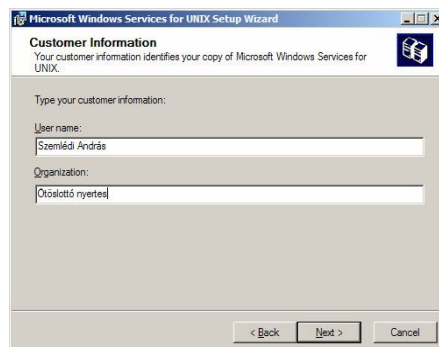
[http://download.microsoft.com/download/a/1/c/a1ca7af1-a6e3-46e7-874a-4c5d8c0fb3b7/sfu35sel\\_en.exe](http://download.microsoft.com/download/a/1/c/a1ca7af1-a6e3-46e7-874a-4c5d8c0fb3b7/sfu35sel_en.exe)

here we go....

Setup



Next...

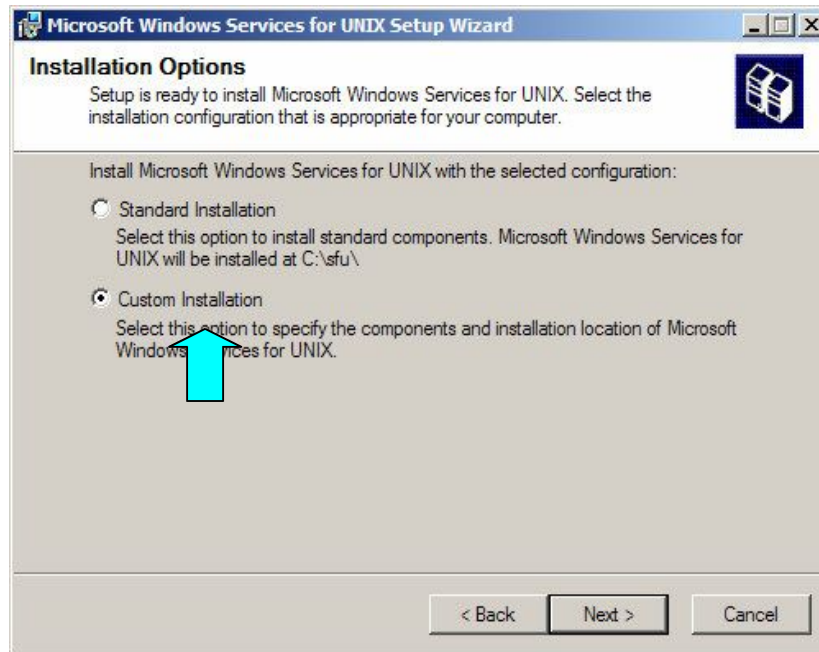


Next...

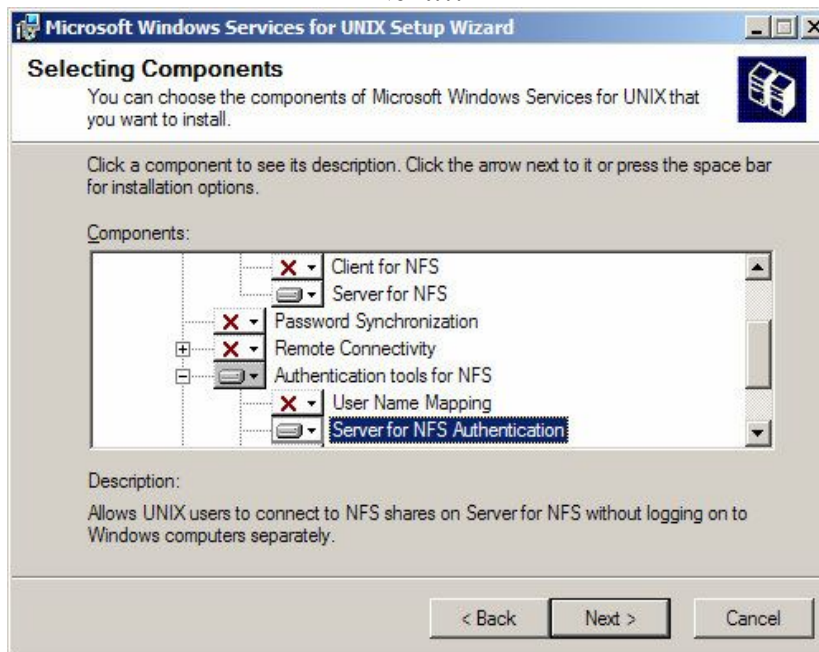


I accept....

Next...

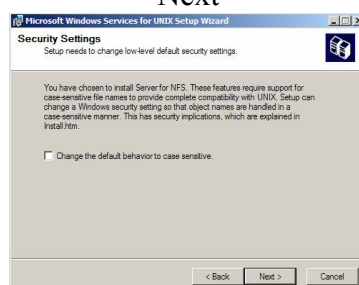


Choose Custom Installation.  
Next...

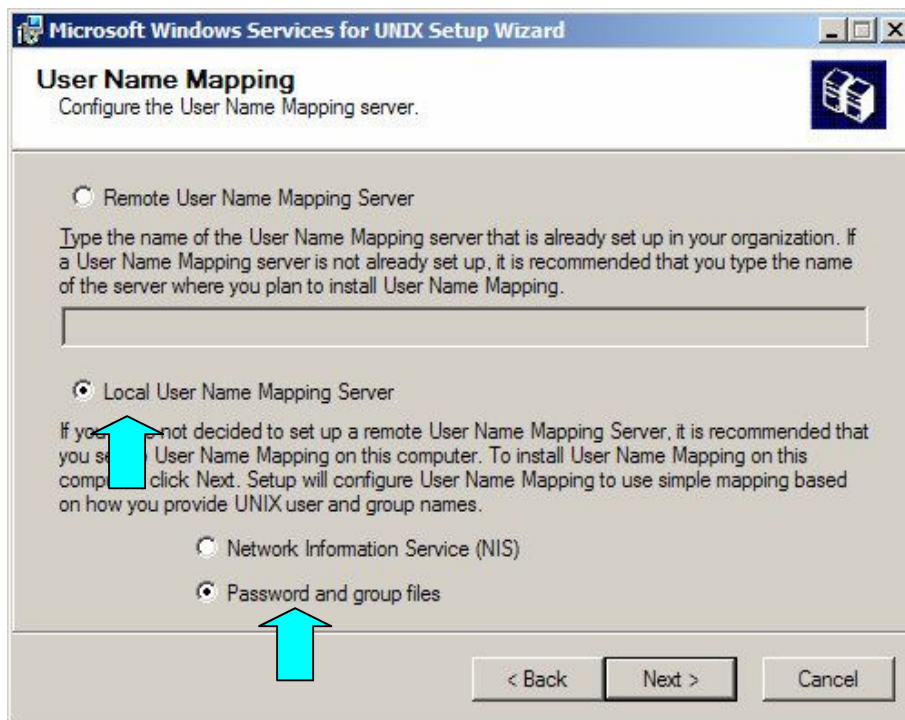


we select the above selection.

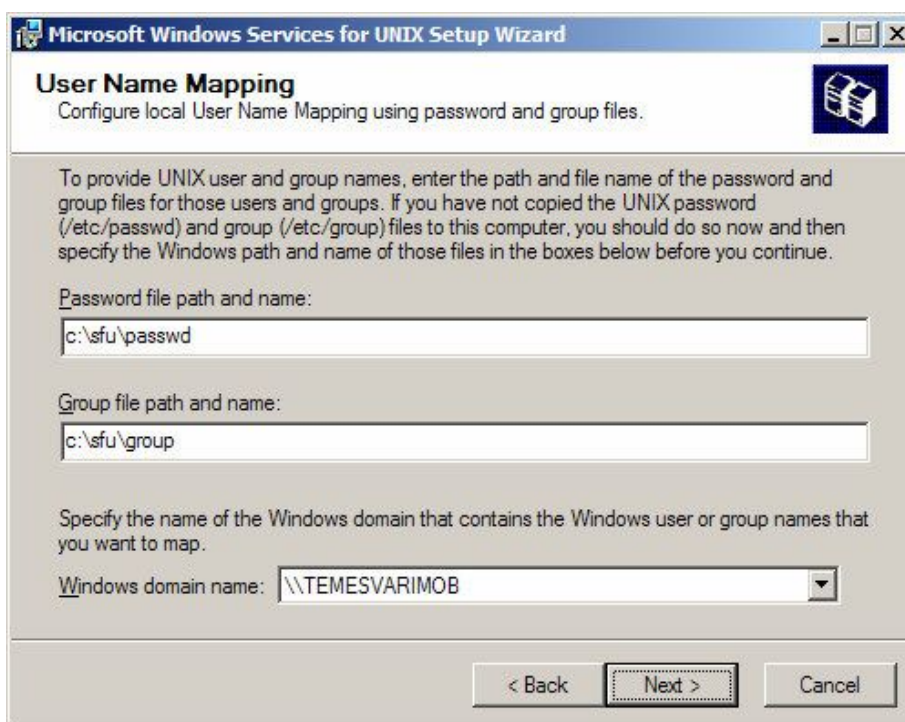
**Server for NFS and NOT!! Client for NFS**  
Authentication tools for NFS  
Server for NFS Authentication  
Next



Next



Choose Local User Name Mapping Server  
&  
Password and group files  
Next



### Here we need to be careful

We enter the paths in the textboxes

Password file path and name : c:\sfu\passwd

Group file path and name : c:\sfu\group

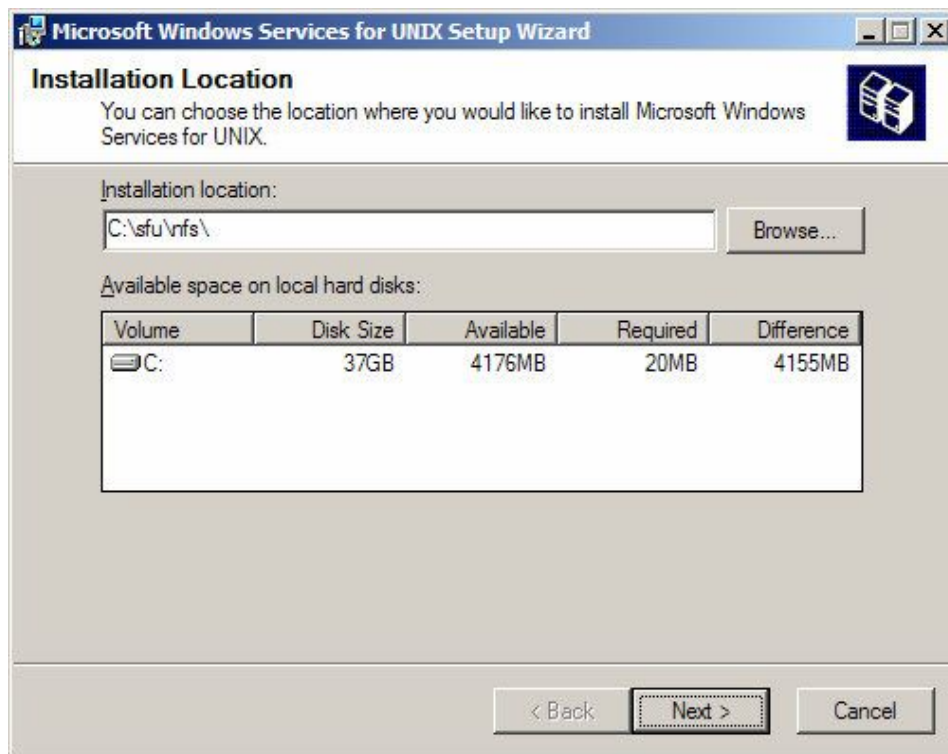
**We can enter a different path or create a folder with a different name as long as we enter them correctly.**

We create a folder on our HDD C:\ sfu

And we insert the files passwd & group that we have downloaded previously from our DB.

The Windows domain name we don't touch , it should say the name of our PC.

Next



We select the folder where the installation will take place.

C:\sfu\nfs\

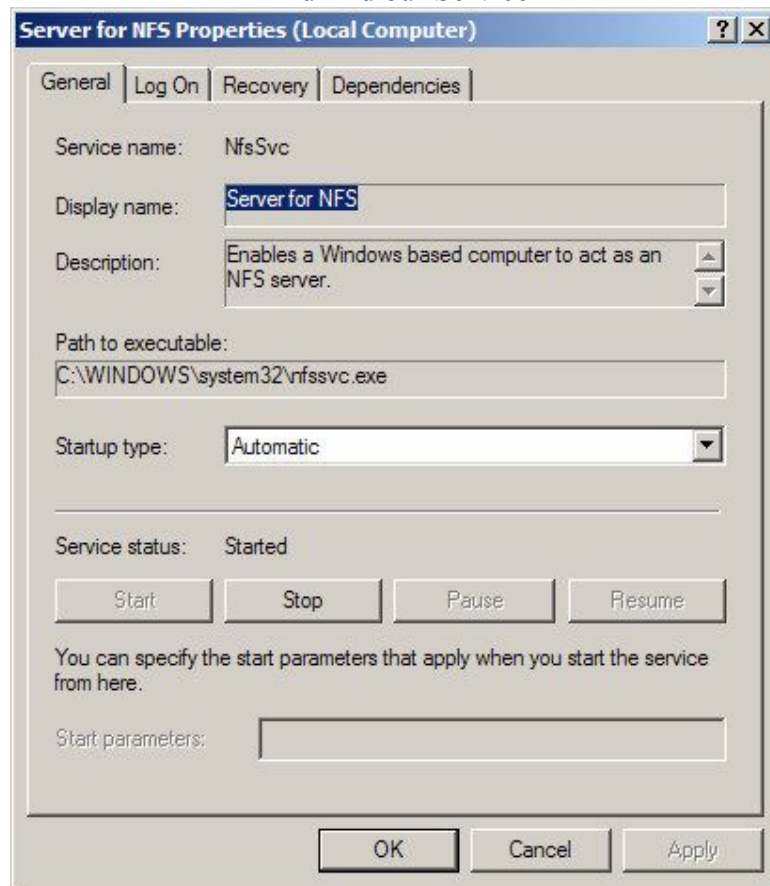
If we have 2 or more HDD we should do the installation on a HDD  
That has an **NTFS** file system.

Next

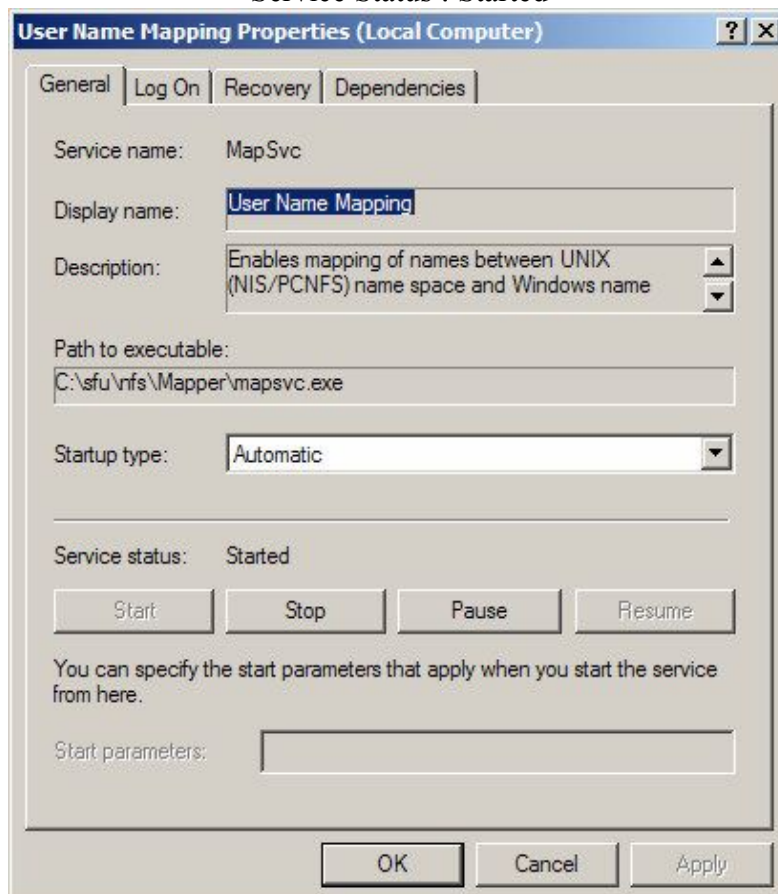


Finish. And reboot system

We go to Start -> Settings -> Control Panel  
Administrative Tools  
And find our Service

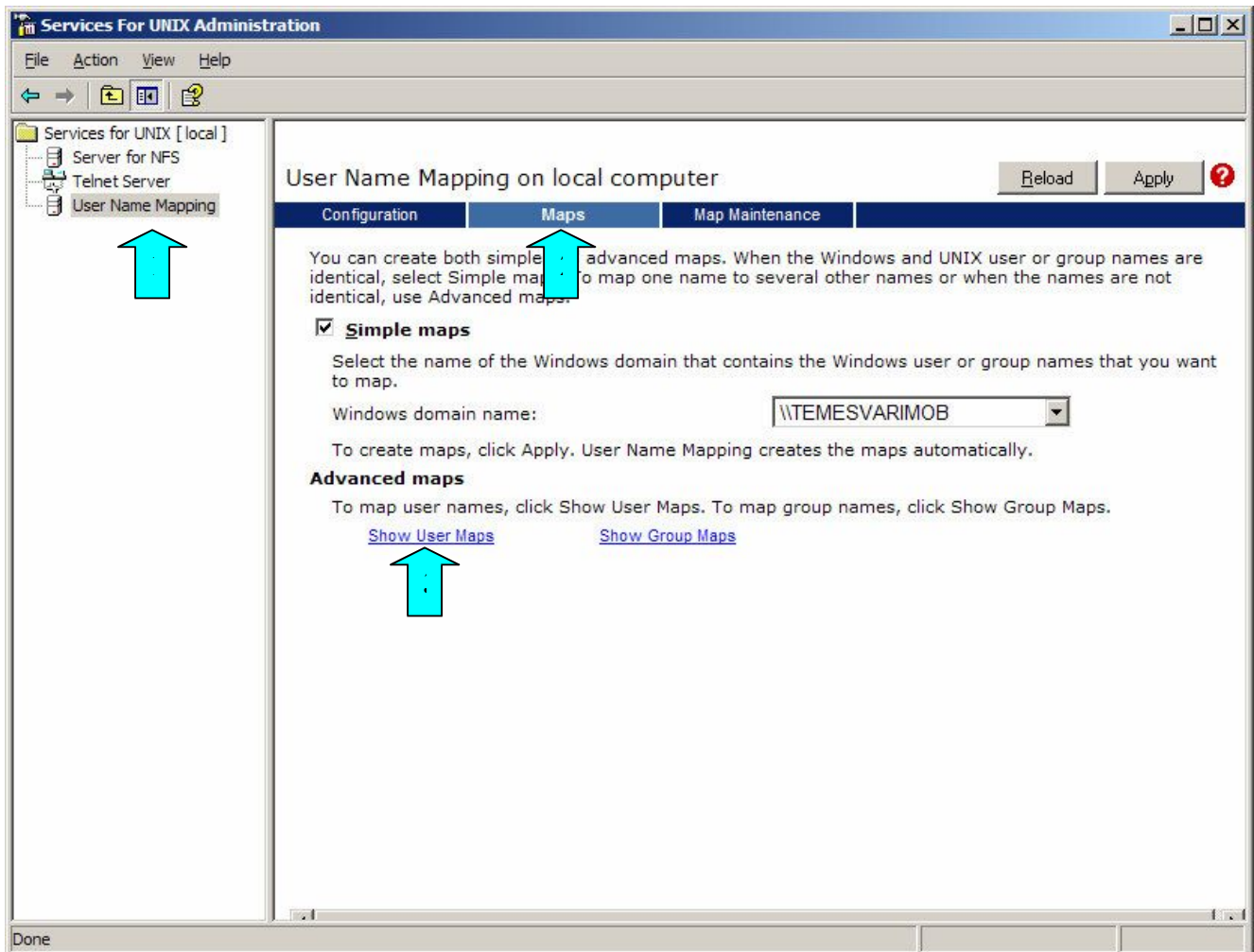


NFS for Server & User Name Mapping and we see if they run  
And if they are configured right to start with Windows  
Startup type : Automatic  
Service Status : Started



We continue non stop

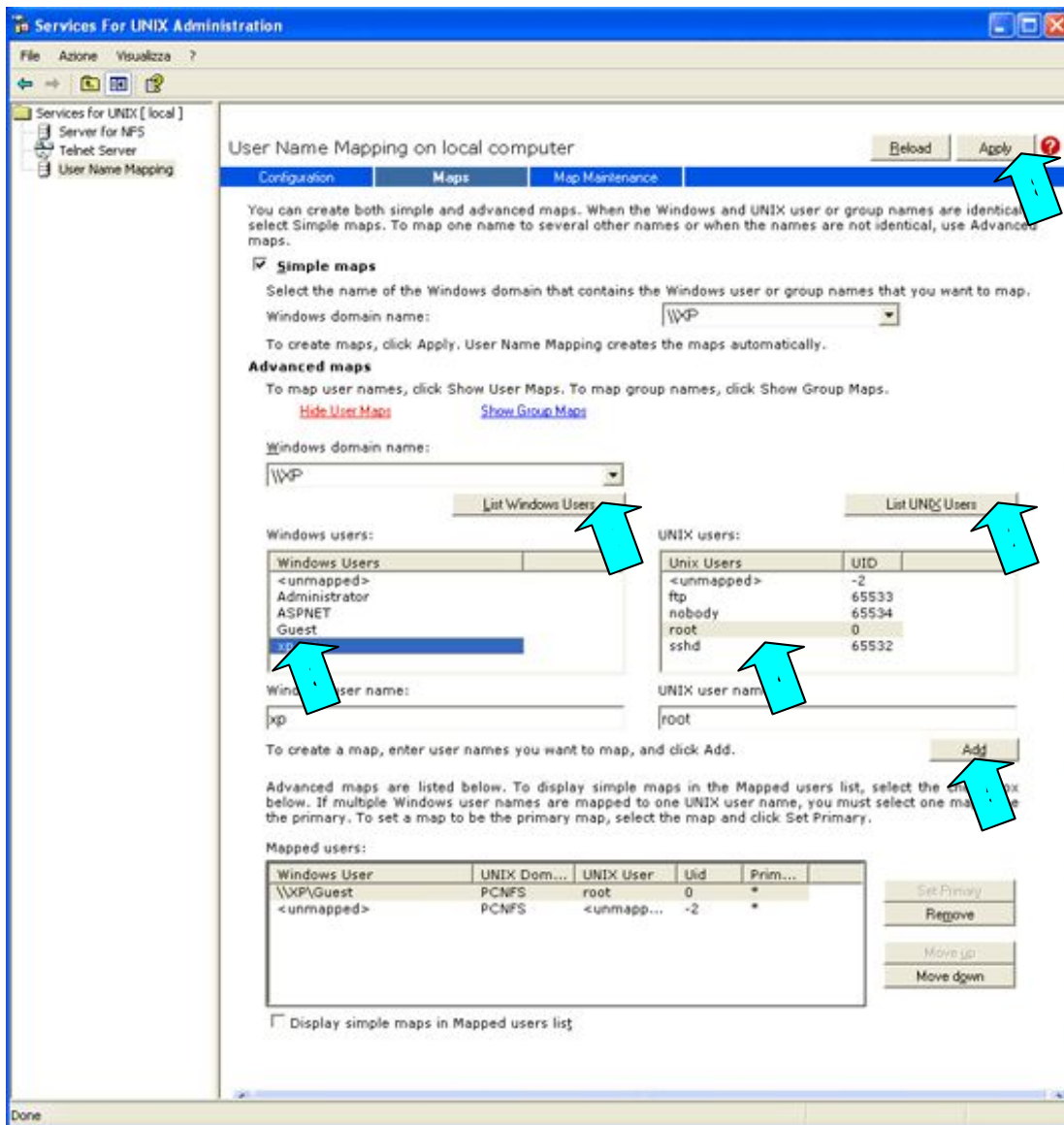
Start -> Programs -> Windows Services for Unix -> Services for Unix Administration



We press in order

1. User Name Mapping
2. Maps
3. Show User Maps

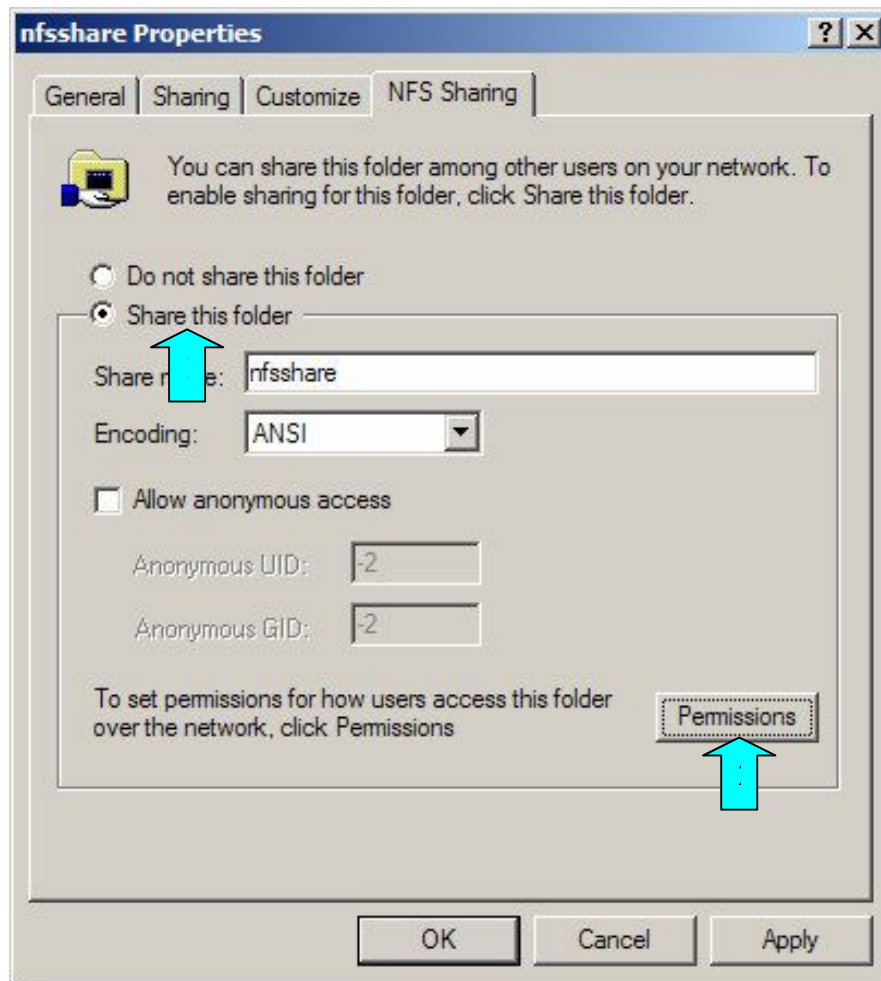
We see a window that looks like this



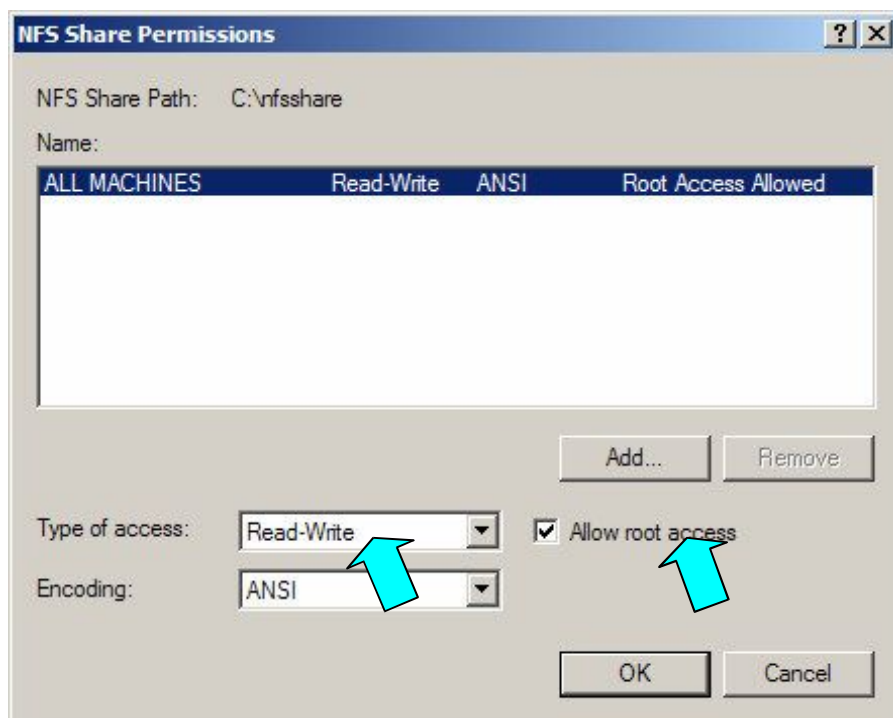
We press in order

1. List Windows User ( Will show all users that we have on Windows)
2. List Unix Users (Will show all user name that are in the files group & passwd that we have downloaded previously from our Dream Box)
3. ON Window User we choose Guest
4. On Unix User we choose root
5. Press the button Add.
6. On Window User we choose <unmapped>
7. ON Unix User we choose <unmapped>
8. Press the button Add.
9. Press the button Apply

We go to our folder where we have decided to install our images.  
Right Click -> properties

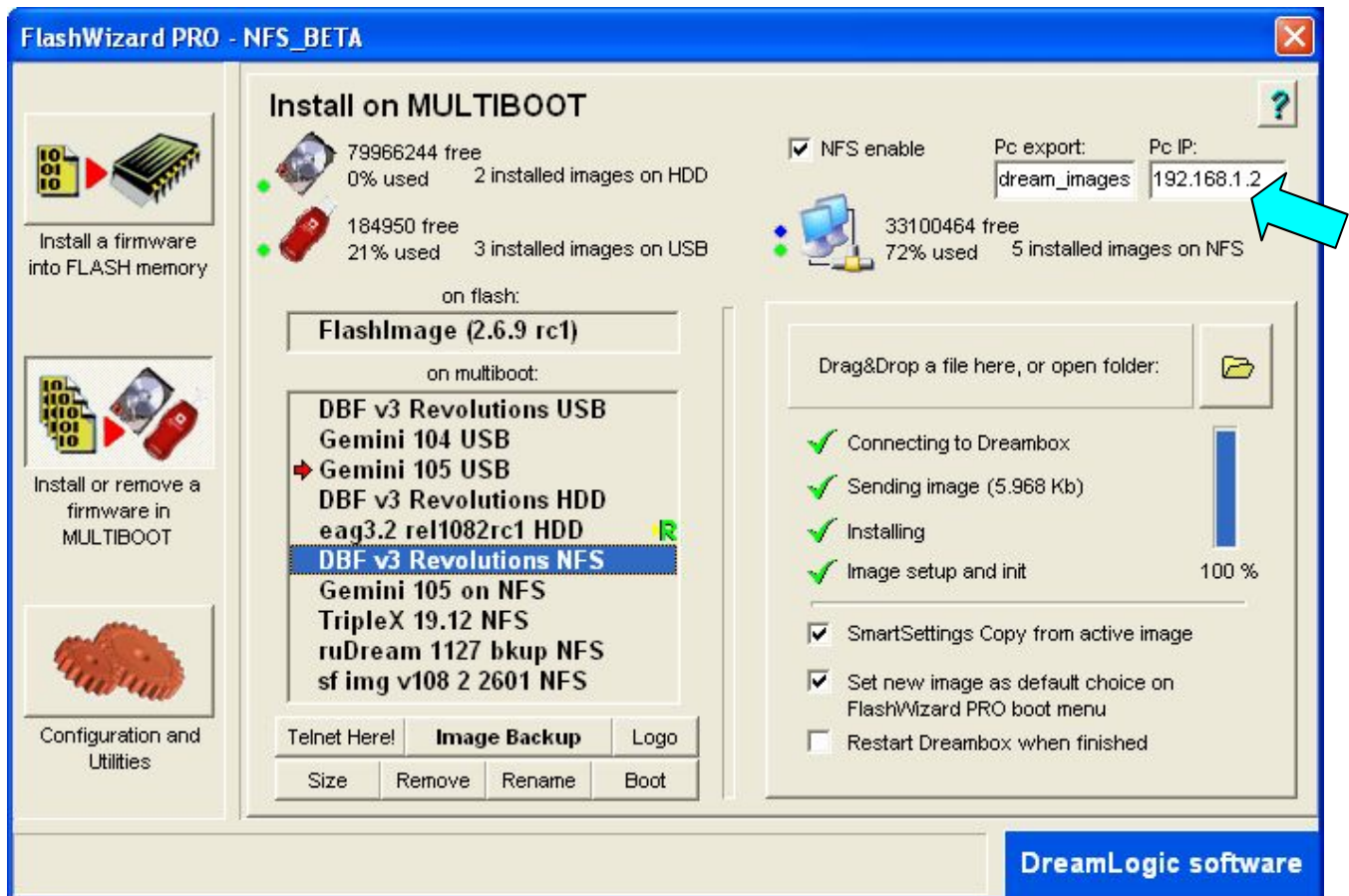


Press the button Share this folder & Permissions



We select  
Type of access: Read-Write  
Allow root access

Open our FlashWizard



We enter on the **Pc Export** the name of the folder that we have created for sharing  
We enter on the **Pc IP** the IP address of our PC  
Then we press the button **NFS enable**.

**IF YOU HAVE ANT DIFFICULTY CONNECTING, IT MAY BE A GOOD IDEA TO CHECK THE FIREWALL CONFIGURATION OR DISABLE IT TEMPORARILY.**

For more info or any question you may have ;  
<http://www.toecuttersden.com>

### RECIEVERS

<http://67.43.4.157/forumdisplay.php?f=1315>

### Dream Box

<http://67.43.4.157/forumdisplay.php?f=1317>

Written by DINGO



Translated by SPARTAN

